

what is domestic violence?

Domestic violence is a pattern of coercive behavior used by one person in order to maintain power and control in a relationship. Batterers repeatedly subject their victims to physical, sexual, verbal, emotional, and/or financial tactics of control in order to force them to do something the batterer wants them to do without regard to the victims' rights or well being.

The Power and Control Wheel

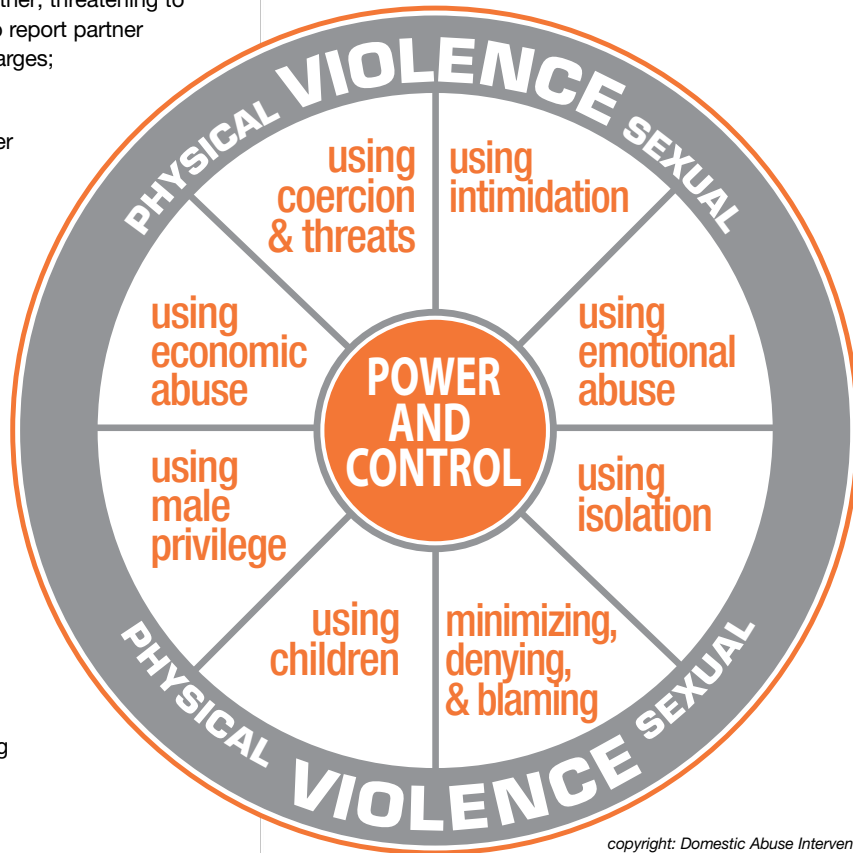
Tactics of Control

Using Coercion and Threats: Making and/or carrying out threats to do something to hurt partner; threatening to leave partner; to commit suicide; to report partner to welfare; making partner drop charges; making partner do illegal things.

Using Intimidation: Making partner afraid by using looks, actions or gestures; smashing things; destroying partner's property; abusing pets; displaying weapons.

Using Emotional Abuse: Putting partner down; making partners feel bad about themselves; calling partner names; making partners think they're crazy; playing mind games; humiliating partner; making partner feel guilty.

Using Isolation: Controlling what partner does, who partner sees and talks to; what partner reads; where partner goes; limiting partner's outside involvement; using jealousy to justify actions.



Minimizing, Denying, and Blaming: Making light of the abuse and not taking partner's concerns about it seriously; saying the abuse didn't happen; shifting responsibility for abusive behavior; saying partner caused it.

Using Children: Making partner feel guilty about the children, using the children to relay messages; using visitation to harass partner; threatening to take the children away.

Using Male Privilege: Treating your partner like a servant; making all the big decisions; acting like the "master of the castle"; being the one to define men's and women's roles.

Using Economic Abuse: Preventing your partner from getting or keeping a job; making your partner ask for money; giving your partner an allowance; taking your partner's money; not letting partner know about or have access to the family income.

copyright: Domestic Abuse Intervention Project, 202 East Superior St., Duluth, MN 55802

YWCA Resolve Family Abuse Program
1114 Quarrier Street
Charleston, WV 25301

www.ywcachaswv.org

Services are provided without regard to race, national origin, religion, age, disability, gender political beliefs, sexual orientation, marital, or socioeconomic status.

Offering victims of abuse free and confidential help

24-Hour Crisis Lines:
charleston calling area **340.3549**
statewide toll-free **1.800.681.8663**

- Shelter: (304) 340.3549
- Program Director: (304) 340.3554
- Administrative Office: (304) 340.3573
- Court Advocacy: (304) 610.1575
- Batterers' Intervention/Prevention Program-BIPP: (304) 340.3570
- Visitation Center & Exchange (voice mail): (304) 610.9118
- Clay County Outreach: (304) 587.7243
- Boone County Outreach: (304) 369.4189



This program is being presented with financial assistance as a grant from the West Virginia Department of Health and Human Resources.

eliminating racism
empowering women
ywca



free and confidential help

resolve family abuse program

eliminating racism
empowering women
ywca

24-hour CRISIS LINE

charleston area
340.3549

statewide toll-free
1.800.681.8663



are you a victim?

Does your partner...

- embarrass you with bad manners and put-downs?
- look at you or act in ways that scare you?
- control what you do, who you see or talk to, or where you go?
- stop you from seeing or talking to friends or family?
- take your money, make you ask for money, or refuse to give you money?
- make all the decisions?
- accuse you of being a bad parent or threaten to take away or hurt your children?
- act like the abuse is no big deal, it's your fault, or even deny doing it?
- destroy your property or threaten to kill your pets?
- intimidate you with guns, knives or other weapons?
- shove you, slap you or hit you?
- force you to drop charges?
- threaten to kill you?

if you are a victim of domestic violence, plan ahead to protect yourself and your family:

- Set aside money for phone calls, a taxi or possibly a night's lodging.
- Stash a package of clothing, medications, toys, personal items and basic needs with a friend or relative.
- Take your children. Leaving them at home could be construed as abandonment and used against you in court.
- Have your personal identification and children's birth certificates, immunization records, and Social Security cards ready to take with you.

if you know someone who is being abused...

- listen, and give emotional support and comfort.
- let the person express how they feel, but do not pry for details.
- don't be judgmental or ask why they didn't confide in you sooner.
- reassure the person that whatever happened was not their fault.
- let the victim make personal decisions about responding to the assault.
- help the person secure a safe place to stay.
- refer the person to community resources such as the YWCA Resolve Family Abuse Program.
- provide them with our Crisis Line telephone numbers from this brochure.

what are your legal options?

A victim of domestic violence has several legal options. You may choose to...

- Contact law enforcement (911)
- Pursue criminal domestic battery charges
- Pursue civil remedies such as a domestic violence protection order, divorce, and /or custody of the children

mission and history

The mission of the YWCA Resolve Family Abuse Program is to eliminate domestic violence by encouraging social and institutional change through leadership, education, empowerment and community collaboration in Clay, Boone, and Kanawha Counties in West Virginia.

The YWCA's Resolve Family Abuse Program grew from a study conducted by the Charleston Chapter of the National Organization for Women in 1977, which concluded that a domestic violence shelter was needed in the Charleston area. The YWCA of Charleston agreed to administer the program in 1981. The YWCA Resolve Family Abuse Program is one of 14 domestic violence programs licensed by the West Virginia WV Family Protection Services Board and is the only licensed domestic violence program serving Clay, Boone, and Kanawha Counties.

how do we help?

The YWCA Resolve Family Abuse Program serves the entire family: the abused, the children, and the abuser. We provide:

- a 24-hour crisis hotline
- emergency shelter for victims of domestic violence and their children
- court and legal advocacy
- counseling and support groups
- programs for children
- parenting classes
- an educational program for batterers
- assistance with housing, education, employment, and relocation
- outreach offices in Clay and Boone Counties



Leaving a violent relationship can be a dangerous time.

If you're thinking about leaving, call us for help with safety planning. An Advocate will assist you with a step-by-step process to help you make safe choices and minimize the risks of leaving for you and your children.

Safety Planning: (304) 340.3549